

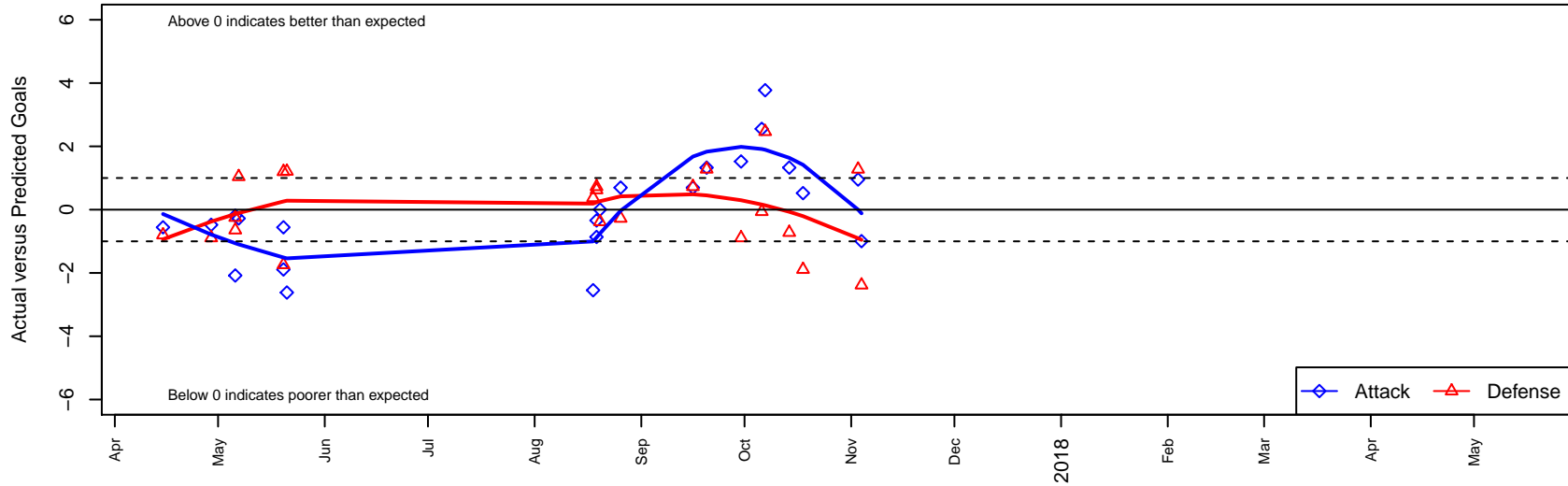
Boise Nationals Timbers Blue B05

Boise Nationals
 Boise, ID
 B05 total strength=1231
 attack=6.28 defense=3.16
 fall league = Idaho D3 Div 1 U13

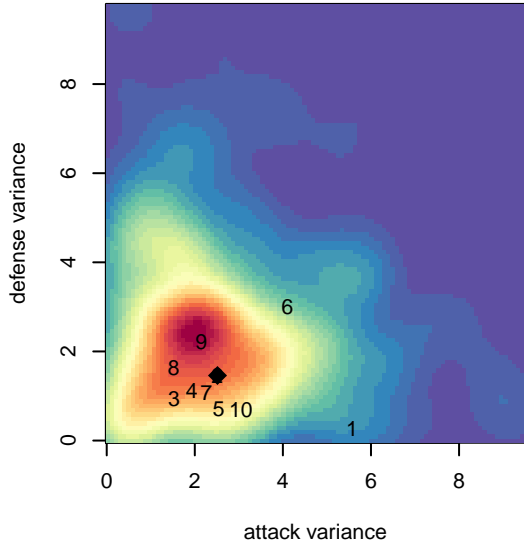
alt names used:
 BOISE NATIONALS TIMBERS BNT 2005 BOY:
 BOISE NATIONALS TIMBERS BNT 2005 BOY:
 Boise Nationals Timbers 05 Blue (ID)

Venues played:
 2016 Spr Idaho D3 U12 North
 2016 Canyon Rim Classic U12 B American U1:
 2016 ID Directors Cup U12B Gold U12
 2017 NW Champions Cup BOYS 05
 2017 Idaho D3 Division 1 U13
 2017 FWRL Fall B05

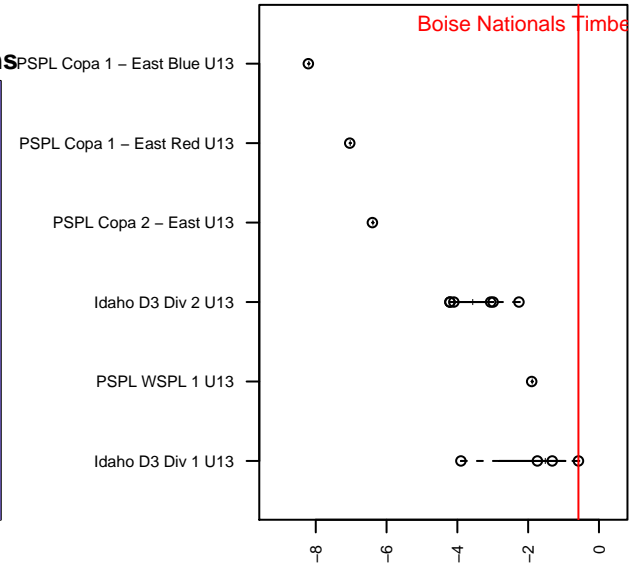
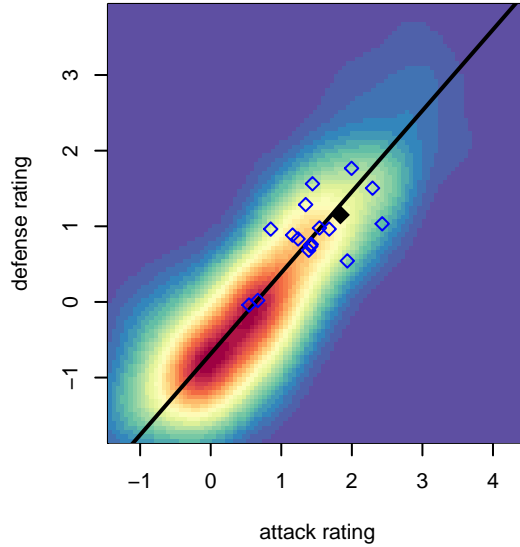
Boise Nationals Timbers Blue B05
 Dots are actual minus expected GF (blue circles) and GA (red triangles).
 Blue line is smoothed change in attack strength. Red is smoothed change in defense strength.



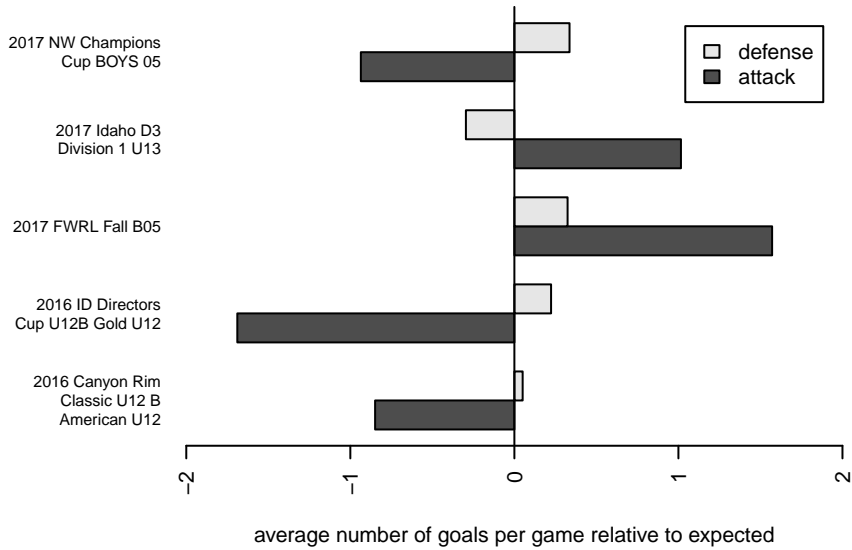
**attack and defense variance (black dot)
relative to other teams
and top 10 in region**



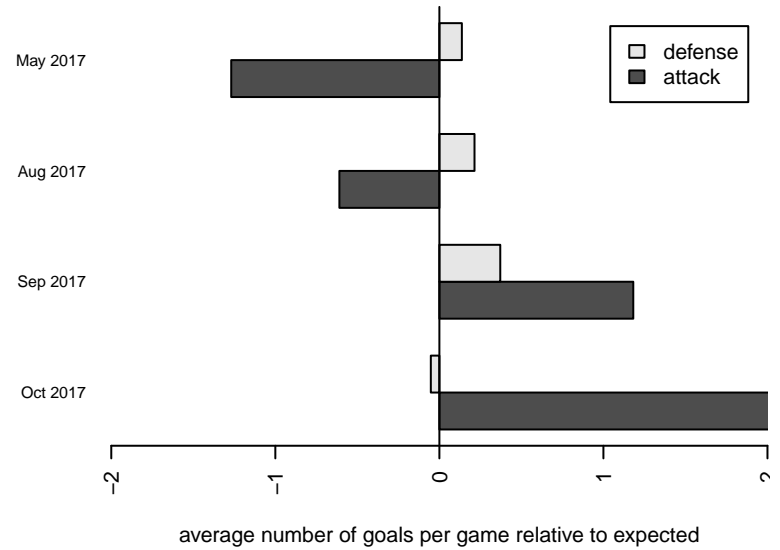
**attack and defense rating
relative to others at age
and all opponents in last 13 months**



Performance relative to 13 month average



Performance relative to 13 month average



| date | home | | away | | venue | pred.home | pred.awa |
|-------------|----------------------------------|---|-----------------------------------|---|--|------------------|-----------------|
| 2017-11-04 | WPFC Black B05 | 4 | Boise Nationals Timbers Blue B05 | 1 | 2017 FWRL Fall B05 | 1.62 | 2.00 |
| 2017-11-03 | Boise Nationals Timbers Blue B05 | 2 | Seattle United Copa B05 | 1 | 2017 FWRL Fall B05 | 1.05 | 2.28 |
| 2017-10-18 | FC Nova Gold JP B05 | 4 | Boise Nationals Timbers Blue B05 | 4 | 2017 Idaho D3 Division 1 U13 | 2.11 | 3.48 |
| 2017-10-14 | Idaho Rush Premier B05 | 2 | Boise Nationals Timbers Blue B05 | 4 | 2017 Idaho D3 Division 1 U13 | 1.28 | 2.67 |
| 2017-10-07 | Boise Nationals Timbers Blue B05 | 6 | Spokane Sounders A B05 | 1 | 2017 FWRL Fall B05 | 2.23 | 3.47 |
| 2017-10-06 | Boise Nationals Timbers Blue B05 | 4 | PacNW Maroon B05 | 3 | 2017 FWRL Fall B05 | 1.45 | 2.94 |
| 2017-09-30 | Boise Nationals Timbers Blue B05 | 5 | FC Nova Gold JP B05 | 3 | 2017 Idaho D3 Division 1 U13 | 3.48 | 2.11 |
| 2017-09-20 | Boise Nationals Timbers Blue B05 | 4 | Idaho Rush Premier B05 | 0 | 2017 Idaho D3 Division 1 U13 | 2.67 | 1.28 |
| 2017-09-16 | Idaho Arsenal United B05 | 0 | Boise Nationals Timbers Blue B05 | 6 | 2017 Idaho D3 Division 1 U13 | 0.73 | 5.30 |
| 2017-08-26 | Boise Nationals Timbers Blue B05 | 6 | Idaho Arsenal United B05 | 1 | 2017 Idaho D3 Division 1 U13 | 5.30 | 0.73 |
| 2017-08-20 | WPFC Black B05 | 2 | Boise Nationals Timbers Blue B05 | 2 | 2017 NW Champions Cup BOYS 05 | 1.62 | 2.00 |
| 2017-08-19 | Wenatchee FC Black B05 | 1 | Boise Nationals Timbers Blue B05 | 1 | 2017 NW Champions Cup BOYS 05 | 1.62 | 1.86 |
| 2017-08-19 | Boise Nationals Timbers Blue B05 | 4 | Westside Timbers Copa B05 | 0 | 2017 NW Champions Cup BOYS 05 | 4.34 | 0.73 |
| 2017-08-18 | Crossfire Premier B B05 | 1 | Boise Nationals Timbers Blue B05 | 0 | 2017 NW Champions Cup BOYS 05 | 1.38 | 2.55 |
| 2017-05-21 | Sting SC Timbers Red B05 | 0 | Boise Nationals Timbers Blue B05 | 0 | 2016 ID Directors Cup U12B Gold U12 | 1.21 | 2.62 |
| 2017-05-20 | Boise Nationals Timbers Blue B05 | 1 | Idaho Rush Blue B05 | 0 | 2016 ID Directors Cup U12B Gold U12 | 1.56 | 1.20 |
| 2017-05-20 | Boise Nationals Timbers Blue B05 | 1 | Boise Nationals Timbers White B05 | 3 | 2016 ID Directors Cup U12B Gold U12 | 2.89 | 1.26 |
| 2017-05-07 | Idaho Rush White B05 | 0 | Boise Nationals Timbers Blue B05 | 2 | 2016 Canyon Rim Classic U12 B American U | 1.04 | 2.28 |
| 2017-05-06 | Boise Nationals Timbers Blue B05 | 1 | Rock Springs Avengers B05 | 2 | 2016 Canyon Rim Classic U12 B American U | 1.19 | 1.36 |
| 2017-05-06 | Boise Nationals Timbers Blue B05 | 0 | Sun Valley Blue B05 | 1 | 2016 Canyon Rim Classic U12 B American U | 2.08 | 0.75 |
| 2017-04-29 | FC Nova Gold JP B05 | 3 | Boise Nationals Timbers Blue B05 | 3 | 2016 Spr Idaho D3 U12 North | 2.11 | 3.48 |
| 2017-04-15 | Idaho Rush Blue B05 | 2 | Boise Nationals Timbers Blue B05 | 1 | 2016 Spr Idaho D3 U12 North | 1.20 | 1.56 |